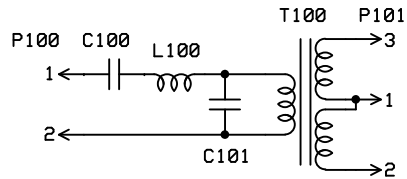


BPF module



Band specific values

Bands	C100	C101	L100	T100
160m	390pF	5600pF	18.7uH, T30-2(red) core 66T #30 AWG	1.4uH(primary), T30-2(red) core 18T #30 AWG on primary 9T #30 AWG on each bifilar secondary
80m/40m	560pF	680pF	1.6uH, T25-2(red) core 22T #30 AWG	1.2uH(primary), T25-2(red) core 18T #30 AWG on primary 9T #30 AWG on each bifilar secondary
30m/20m/17m	180pF	220pF	0.78uH, T25-6(yellow) core 17T #30 AWG	0.6uH(primary), T25-6(yellow) core 14T #30 AWG on primary 7T #30 AWG on each bifilar secondary
15m/12m/10m	82pF	330pF	0.53uH, T25-6(yellow) core 14T #30 AWG	0.13uH(primary), T25-6(yellow) core 7T #30 AWG on primary 4T #30 AWG on each bifilar secondary

Bill of Materials for Lite+Xatllv8.3

Resistors	Used where	Quantity
1.00k 1%	R1, R2, R19, R20	4
10.0k 1%	R3, R4, R5, R6, R11, R12, R15	7
100 1/6W	R7, R8, R9, R10, R16, R23, R24, R25	8
10.0 1%	R13, R14, R17, R18	4
4.99k 1%	R21, R22	2
Capacitors	Used where	Quantity
4.7uF ceramic	C1, C3, C7, C14	4
0.1uF, SMT1206	C2, C15, C21, C22, C23	5(black marked strip)
0.01uF, SMT1206	C4, C5, C6, C8, C9, C11, C12, C13, C16, C24	10
0.01uF ceramic	C10	1
0.047uF ceramic	C17, C18	2
220pF ceramic	C19, C20	2
ICs	Used where	Quantity
LM7805	U1 on top of board	1
LP2992AIM5-3.3v	U2 on bottom of board	1
12F683 and socket	U3 on top of board	1
Si570, (LVDS or CMOS)	U4 on bottom of board	1
74AC74, SOIC14	U5 on bottom of board	1
FST3253, SOIC16	U6 on bottom of board	1
LT6231, SOIC8	U7 on bottom of board	1
FIN1002	U8 on bottom of board	1
Connectors	Used where	Quantity
2-pin socket	J1	1
3-pin socket	J2	1
Switch	Used where	Quantity
4-position DIP switch	SW1	1
Circuit board	Quantity	
Lite+Xtall v8.3	1	
Hardware	Quantity	
4-40 3/8 inch machine screw	5	
4-40 hex nut	5	
#4 star lock washer	1	
#4 1/8 inch nylon spacer	4	
#4 nylon washer	4	

Bill of Materials for each BPF module

Capacitors	Used where	Quantity
ceramic capacitor	C100	1(see band specific value)
ceramic capacitor	C101	1(see band specific value)
Inductors/transformers	Used where	Quantity
Toroid inductor	L100	1(see band specific value)
Toroid transformer	T100	1(see band specific value)
Connectors	Used where	Quantity
2-pin header	P100	1
3-pin header	P101	1
Circuit board	Quantity	
Lite+Xtall BPF board	1	

SoftRock Projects

SoftRock Lite+Xtall v8.3

Tony KB9YIG

Rev 1.0

5/15/2008

Page 2 of 3